



# ROOTSTOCK MANUFACTURING ERP

## EXTENDED PROFILE



# rootstock®

MANUFACTURING ERP

## OVERVIEW

Rootstock is an ERP system, purpose-built for mid-sized manufacturers looking to digitally transform on a next-generation platform. It includes all the capabilities manufacturers need to manage the supply chain, inventory, production, and financials in a single solution powered by the Salesforce Platform.



## SOFTWARE SPECIFICATION

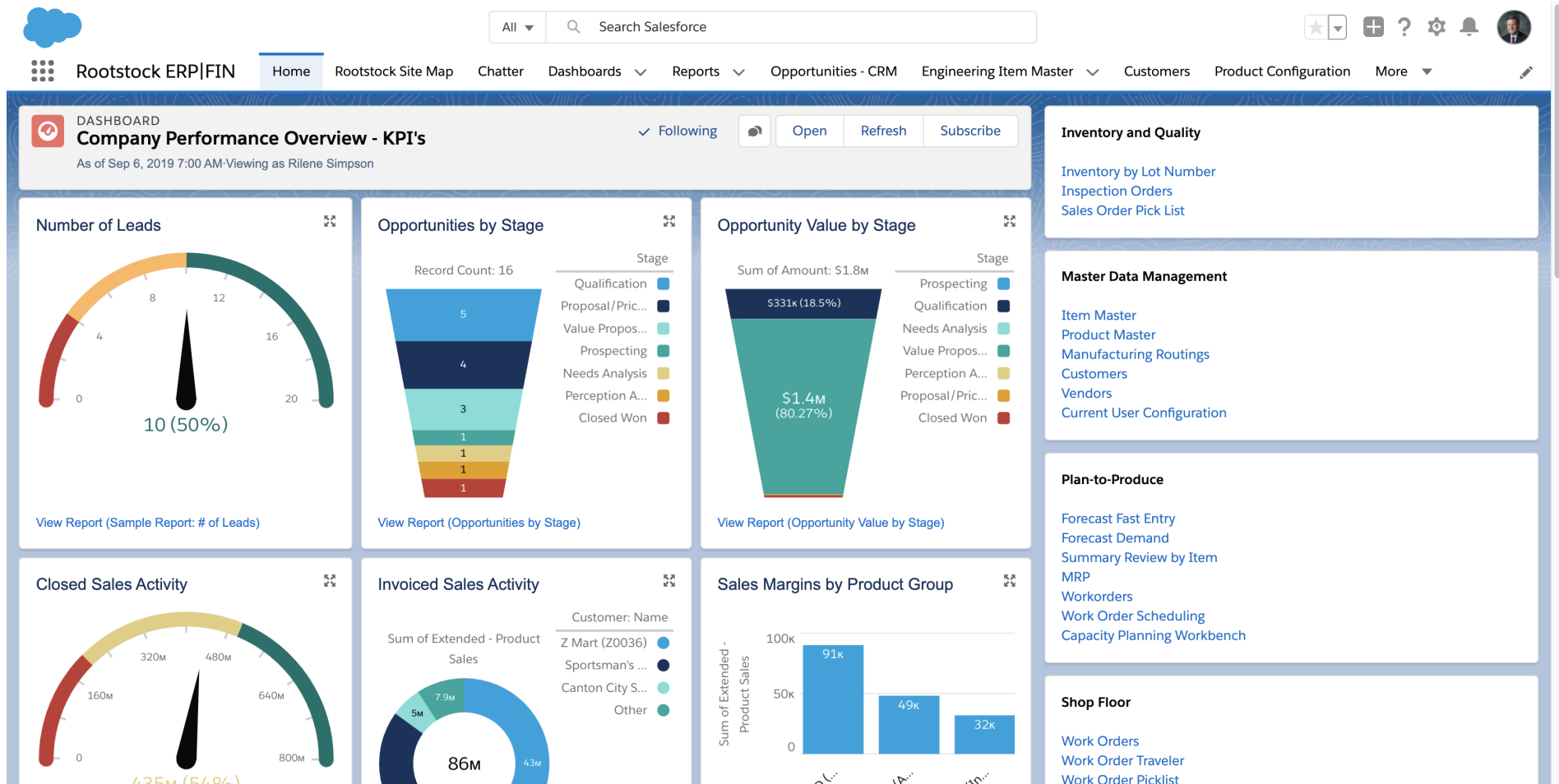
OVERVIEW	
PRODUCT NAME	Rootstock Manufacturing ERP
BUSINESS SECTORS	
DISTRIBUTION	✗
GOVERNMENT & NPO	✗
MANUFACTURING	✓
RETAIL	✗
SERVICES	✗
INDUSTRY	
AEROSPACE & DEFENSE	✓
AUTOMOTIVE	✓
CHEMICAL	✗
CONSTRUCTION	✓

COSMETICS	✓
ELECTRONICS	✓
ENERGY/POWER/UTILITIES	✗
ENGINEERING	✓
FASHION	✓
FINANCIAL SERVICES	✗
FOOD & BEVERAGE	✓
LOCAL GOVERNMENT	✗
MEDIA	✗
MEDICAL & HEALTHCARE	✓
METALWORKING	✓
OILFIELD	✗
PACKAGING	✓
PAINT & ADHESIVES	✓
PHARMACEUTICAL	✓
PLASTICS & RUBBER	✓
PRINT & DESIGN	✓
RENTAL	✗
TELECOMMUNICATIONS	✗
WOODWORKING	✓

CANNABIS	✓
EDUCATION	✗
NONPROFIT	✗
ERP SOFTWARE FEATURES	
BILLING	✓
BUSINESS INTELLIGENCE/ANALYTICS	✓
COSTING	✓
CRM	✓
CUSTOMER SERVICE	✓
PRODUCT DESIGN	✓
FINANCIALS & ACCOUNTING	✓
HR	✗
INVENTORY MANAGEMENT	✓
ORDER MANAGEMENT	✓
PLANNING & SCHEDULING	✓
PROJECT MANAGEMENT	✓
PURCHASING	✓
QUALITY CONTROL	✓
SALES	✓
SHIPPING & DISTRIBUTION	✓

SUPPLY CHAIN MANAGEMENT	✓
WAREHOUSE MANAGEMENT	✗
ASSET MANAGEMENT	✓
DOCUMENT MANAGEMENT	✗
CUSTOMER SUITABILITY	
ENTERPRISE (1000+ EMPLOYEES)	✓
MEDIUM SIZE (251-1000 EMPLOYEES)	✓
SMALL BUSINESS (1-250 EMPLOYEES)	✗
ADDITIONAL PRODUCT INFO	
MULTI LANGUAGE	✓
MULTI CURRENCY	✓
CUSTOMIZABLE	✗
SYSTEM HOSTING	
CLOUD	✓
INSTALLED ON PREMISE	✗
FURTHER INFORMATION	
IMPLEMENTATION TIMEFRAME	3-6 Months
PRICING	Not Available

## SOFTWARE SCREENSHOTS



TOOL (ST 70)

View Report (SalesOrderSummary)

On-Hand Inventory Valuation by Site  
Top 5 Locations

30M

View Report (InvoicedOrderSummary)

On-Hand Inventory Valuation by Pr...

AV-CLOUD  
AV-PREM  
INSTALL

Product: Product Group: Name

View Report (Sales Margins by Product Group)

On-Hand Inventory Valuation Sum...

Work Order Issue  
Operation Assignments by Work Center  
Work Center Dispatch List  
Consolidated Work Order Picklist

Procure-to-Pay  
Vendors

